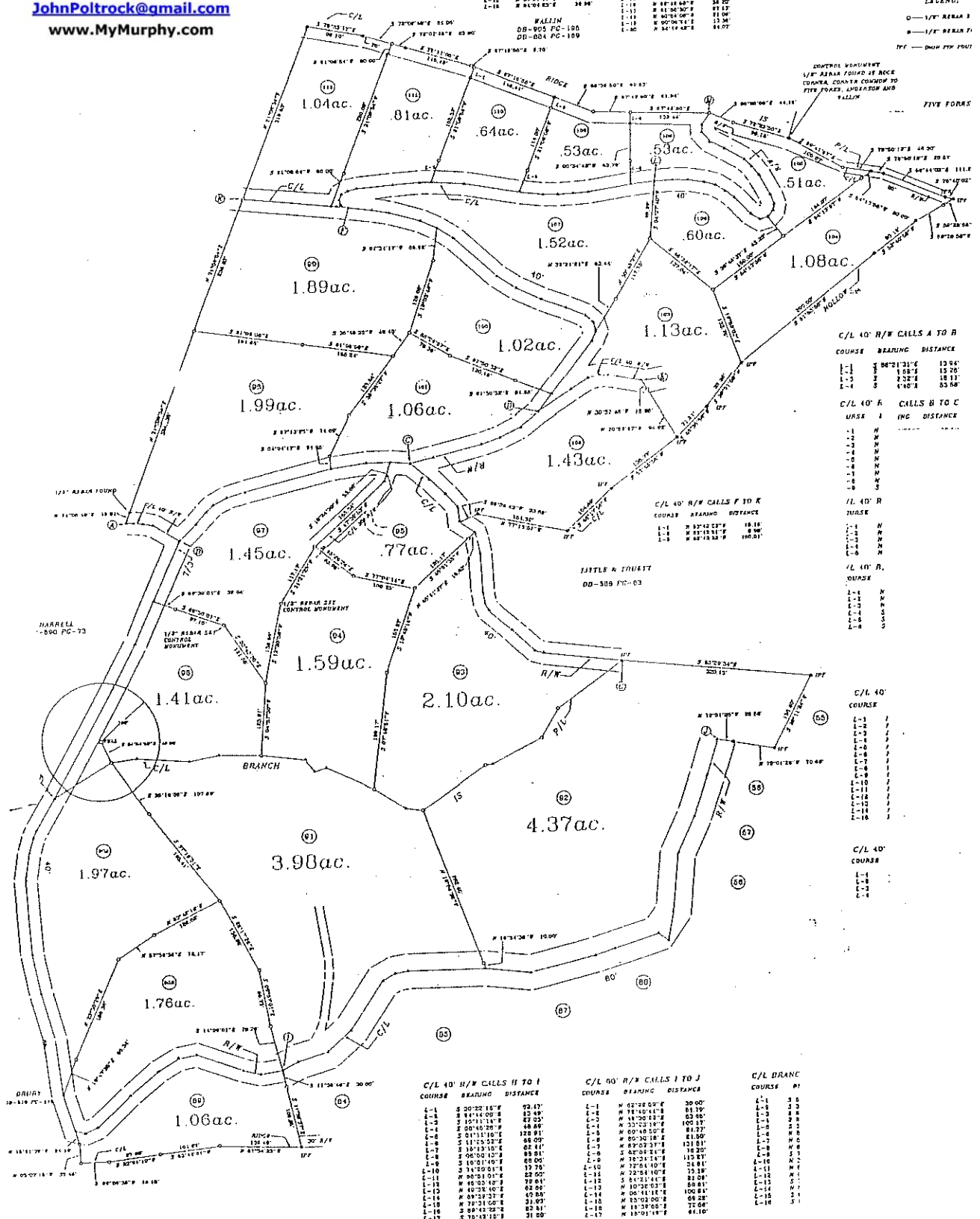
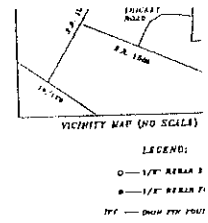


John & Jessica Poltrock
Toll Free (866) 687-7496
Direct (828) 557-2270
JohnPoltrock@gmail.com
www.MyMurphy.com

COURSE	BEARING	DISTANCE	COURSE	BEARING	DISTANCE	COURSE	BEARING	DISTANCE
1-1	S 81°06'54"E	80.00'	1-1	N 77°04'30"W	10.51'	1-1	N 82°10'07"E	21.92'
1-2	S 81°06'54"E	80.00'	1-2	N 77°04'30"W	10.51'	1-2	N 82°10'07"E	21.92'
1-3	S 81°06'54"E	80.00'	1-3	N 77°04'30"W	10.51'	1-3	N 82°10'07"E	21.92'
1-4	S 81°06'54"E	80.00'	1-4	N 77°04'30"W	10.51'	1-4	N 82°10'07"E	21.92'
1-5	S 81°06'54"E	80.00'	1-5	N 77°04'30"W	10.51'	1-5	N 82°10'07"E	21.92'
1-6	S 81°06'54"E	80.00'	1-6	N 77°04'30"W	10.51'	1-6	N 82°10'07"E	21.92'
1-7	S 81°06'54"E	80.00'	1-7	N 77°04'30"W	10.51'	1-7	N 82°10'07"E	21.92'
1-8	S 81°06'54"E	80.00'	1-8	N 77°04'30"W	10.51'	1-8	N 82°10'07"E	21.92'
1-9	S 81°06'54"E	80.00'	1-9	N 77°04'30"W	10.51'	1-9	N 82°10'07"E	21.92'
1-10	S 81°06'54"E	80.00'	1-10	N 77°04'30"W	10.51'	1-10	N 82°10'07"E	21.92'
1-11	S 81°06'54"E	80.00'	1-11	N 77°04'30"W	10.51'	1-11	N 82°10'07"E	21.92'
1-12	S 81°06'54"E	80.00'	1-12	N 77°04'30"W	10.51'	1-12	N 82°10'07"E	21.92'
1-13	S 81°06'54"E	80.00'	1-13	N 77°04'30"W	10.51'	1-13	N 82°10'07"E	21.92'
1-14	S 81°06'54"E	80.00'	1-14	N 77°04'30"W	10.51'	1-14	N 82°10'07"E	21.92'
1-15	S 81°06'54"E	80.00'	1-15	N 77°04'30"W	10.51'	1-15	N 82°10'07"E	21.92'
1-16	S 81°06'54"E	80.00'	1-16	N 77°04'30"W	10.51'	1-16	N 82°10'07"E	21.92'
1-17	S 81°06'54"E	80.00'	1-17	N 77°04'30"W	10.51'	1-17	N 82°10'07"E	21.92'
1-18	S 81°06'54"E	80.00'	1-18	N 77°04'30"W	10.51'	1-18	N 82°10'07"E	21.92'
1-19	S 81°06'54"E	80.00'	1-19	N 77°04'30"W	10.51'	1-19	N 82°10'07"E	21.92'
1-20	S 81°06'54"E	80.00'	1-20	N 77°04'30"W	10.51'	1-20	N 82°10'07"E	21.92'



C/L 40' R/W CALLS A TO B

COURSE	BEARING	DISTANCE
1-1	S 81°06'54"E	13.00'
1-2	S 81°06'54"E	15.20'
1-3	S 81°06'54"E	18.17'
1-4	S 81°06'54"E	25.80'

C/L 40' R/W CALLS B TO C

COURSE	BEARING	DISTANCE
1-1	N	
1-2	N	
1-3	N	
1-4	N	
1-5	N	
1-6	N	
1-7	N	
1-8	N	
1-9	N	
1-10	N	

C/L 40' R/W CALLS F TO K

COURSE	BEARING	DISTANCE
1-1	N 82°10'07"E	18.16'
1-2	N 82°10'07"E	8.96'
1-3	N 82°10'07"E	100.00'

C/L 40' R/W CALLS L TO M

COURSE	BEARING	DISTANCE
1-1	N	
1-2	N	
1-3	N	
1-4	N	
1-5	N	
1-6	N	
1-7	N	
1-8	N	
1-9	N	
1-10	N	
1-11	N	
1-12	N	
1-13	N	
1-14	N	
1-15	N	
1-16	N	
1-17	N	
1-18	N	
1-19	N	
1-20	N	

C/L 40' COURSE

COURSE	BEARING	DISTANCE
1-1	N	
1-2	N	
1-3	N	
1-4	N	
1-5	N	
1-6	N	
1-7	N	
1-8	N	
1-9	N	
1-10	N	
1-11	N	
1-12	N	
1-13	N	
1-14	N	
1-15	N	
1-16	N	
1-17	N	
1-18	N	
1-19	N	
1-20	N	

C/L 40' R/W CALLS H TO I

COURSE	BEARING	DISTANCE
1-1	S 20°22'16"E	72.47'
1-2	S 84°14'00"E	15.49'
1-3	S 15°11'14"E	82.03'
1-4	S 00°40'28"E	48.89'
1-5	S 01°11'10"E	22.91'
1-6	S 11°53'52"E	66.00'
1-7	S 10°13'10"E	82.41'
1-8	S 00°00'00"E	89.91'
1-9	S 10°21'49"E	85.00'
1-10	S 74°00'00"E	75.76'
1-11	N 08°31'01"E	22.50'
1-12	N 08°31'01"E	79.84'
1-13	N 40°23'10"E	62.90'
1-14	N 08°31'01"E	62.90'
1-15	N 08°31'01"E	31.09'
1-16	N 73°11'02"E	85.81'
1-17	S 70°14'22"E	31.00'
1-18	N 01°12'08"E	31.32'

C/L 40' R/W CALLS J TO K

COURSE	BEARING	DISTANCE
1-1	N 02°28'00"E	30.00'
1-2	N 78°40'41"E	81.30'
1-3	N 18°20'12"E	63.85'
1-4	N 23°23'18"E	100.00'
1-5	N 00°48'30"E	84.97'
1-6	N 05°30'18"E	81.00'
1-7	N 09°03'30"E	121.91'
1-8	S 02°08'24"E	10.20'
1-9	N 78°21'14"E	115.93'
1-10	N 72°54'10"E	24.81'
1-11	N 22°58'10"E	75.39'
1-12	S 84°51'41"E	82.20'
1-13	N 10°22'03"E	89.81'
1-14	N 00°18'18"E	100.84'
1-15	N 10°22'03"E	69.28'
1-16	N 18°38'05"E	77.66'
1-17	N 18°03'18"E	61.10'

C/L BRANCH

COURSE	BEARING	DISTANCE
1-1	S 60'	
1-2	S 60'	
1-3	S 60'	
1-4	S 60'	
1-5	S 60'	
1-6	S 60'	
1-7	S 60'	
1-8	S 60'	
1-9	S 60'	
1-10	S 60'	
1-11	S 60'	
1-12	S 60'	
1-13	S 60'	
1-14	S 60'	
1-15	S 60'	
1-16	S 60'	
1-17	S 60'	
1-18	S 60'	
1-19	S 60'	
1-20	S 60'	

FPA